



How to go through a Wall

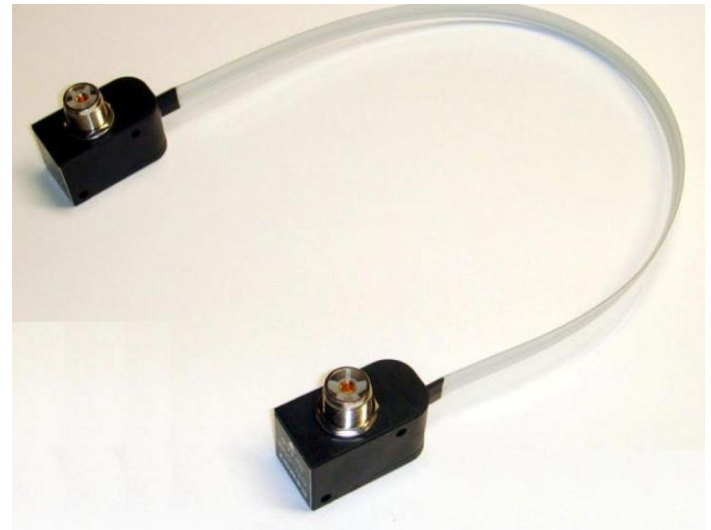
Tom Fagan K7DF

Feeding Coax through a Wall

- Ok, you just moved or your setting up a new station
- How do I get coax through a wall to an antenna?
- There are several types of walls/structures
 - Brick, Concrete, Stucco, Windows, Wood, etc

Window access

- Under a closed window
- Flat cable





Plexiglass

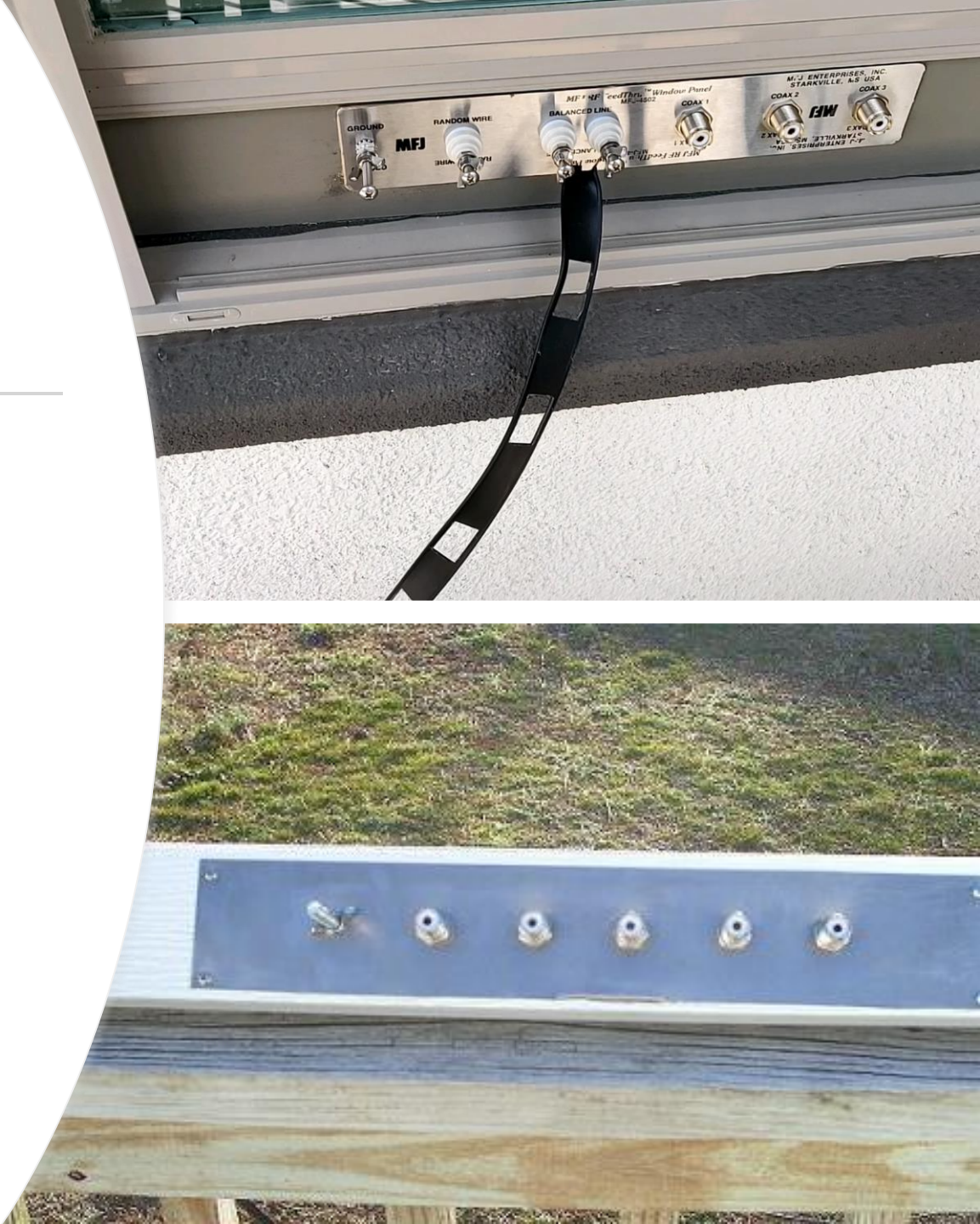


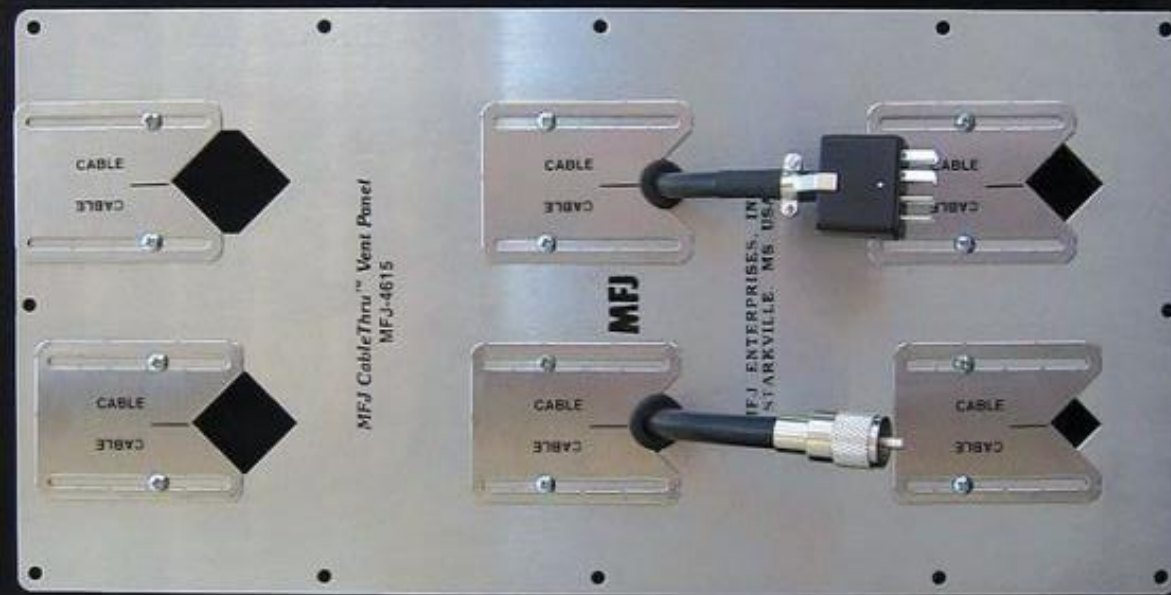
Window screen

Window access

Window Access

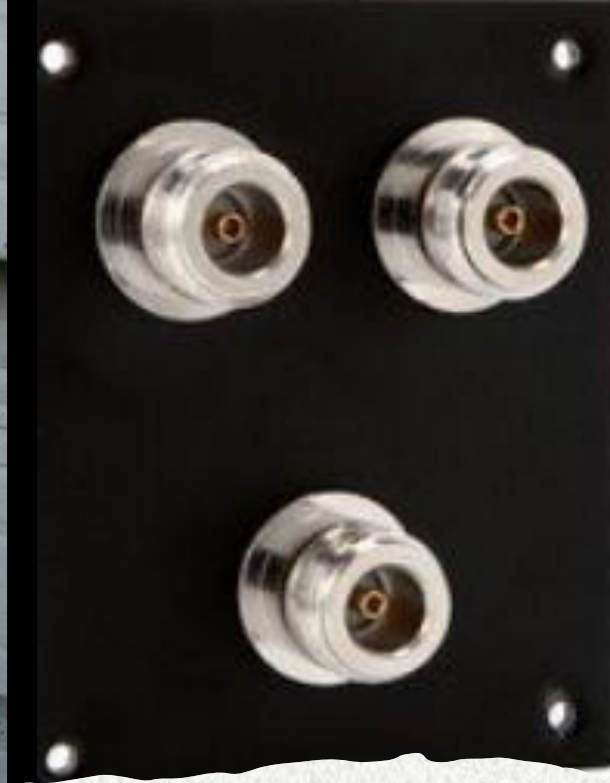
- Under a window





Vent access

Make sure you use
the gromets!

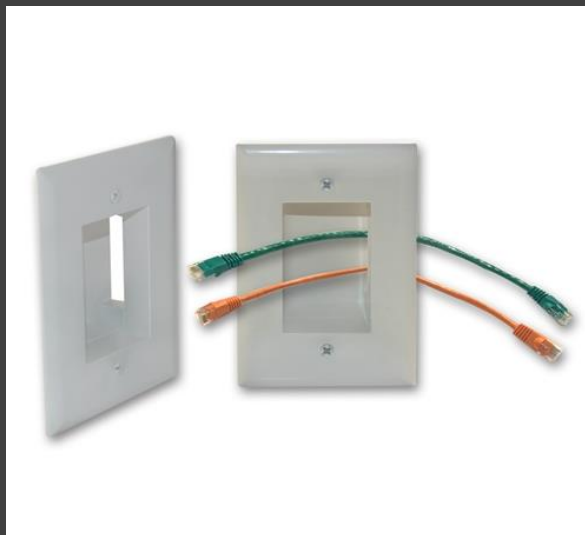
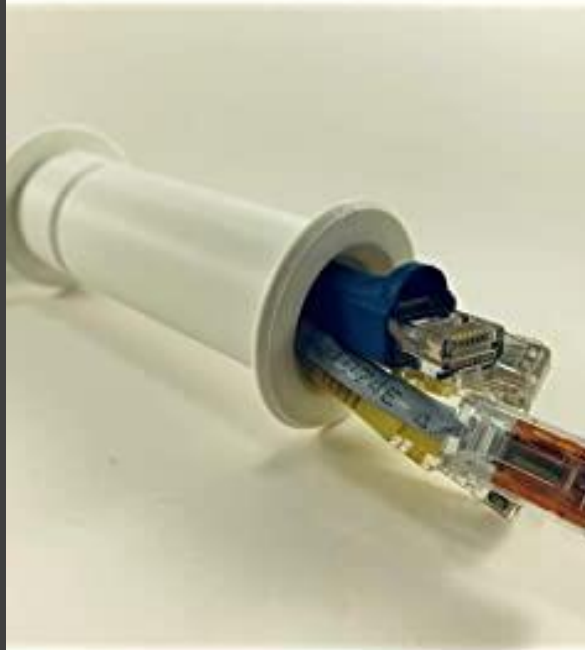


Through the wall

- Long Coax feed thru's
- Plastic feed thru's



Kirk KK6KC
feed thru's



Feedthru's



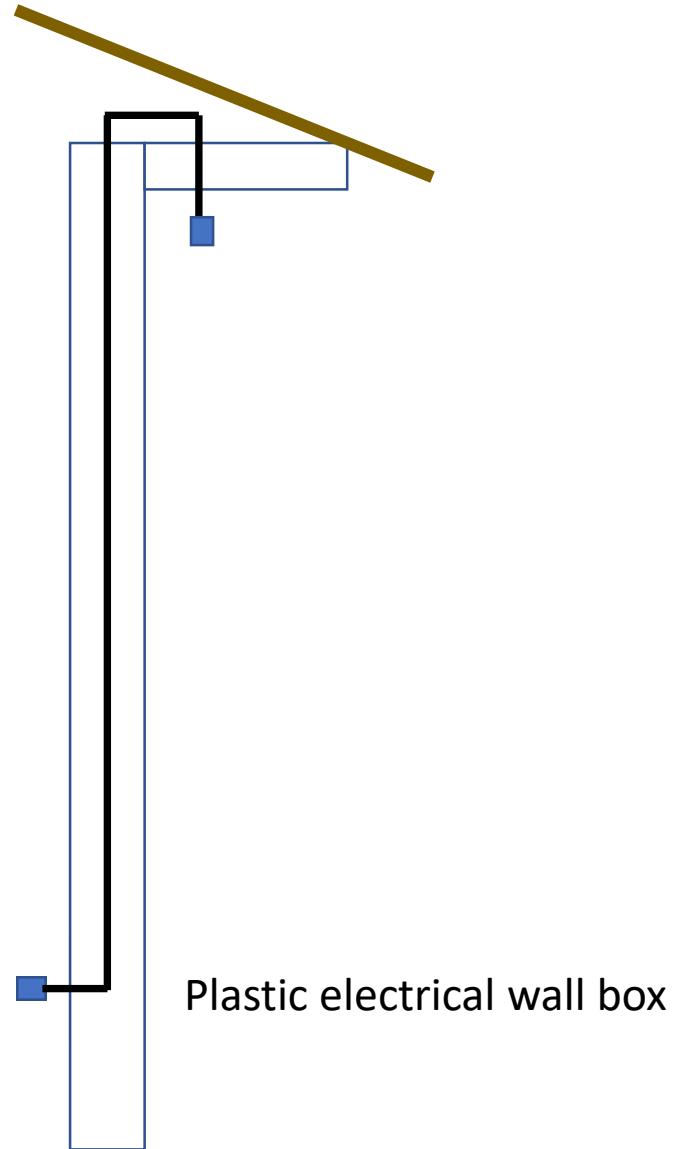
W6AIX

<https://www.kf7p.com/KF7P/CableManagement.html>



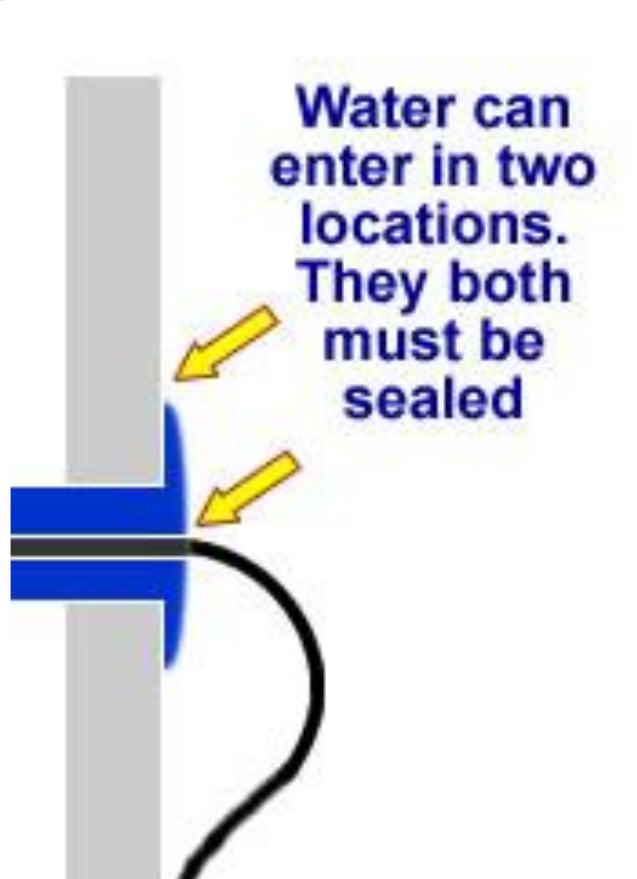
AE8TT

Up the wall and thru the Eve of the house





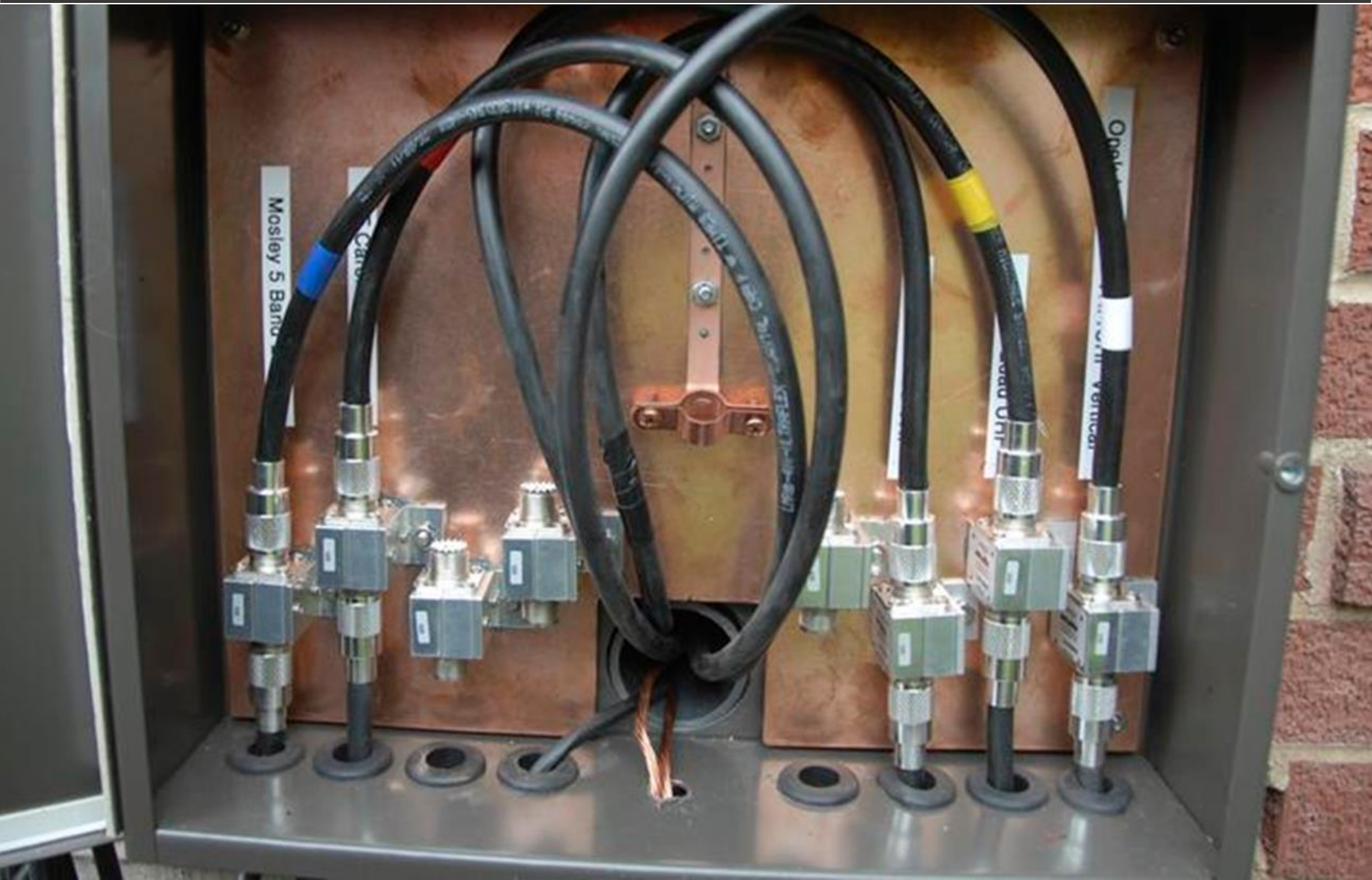
W9GB



Weather proofing

PVC thru wall

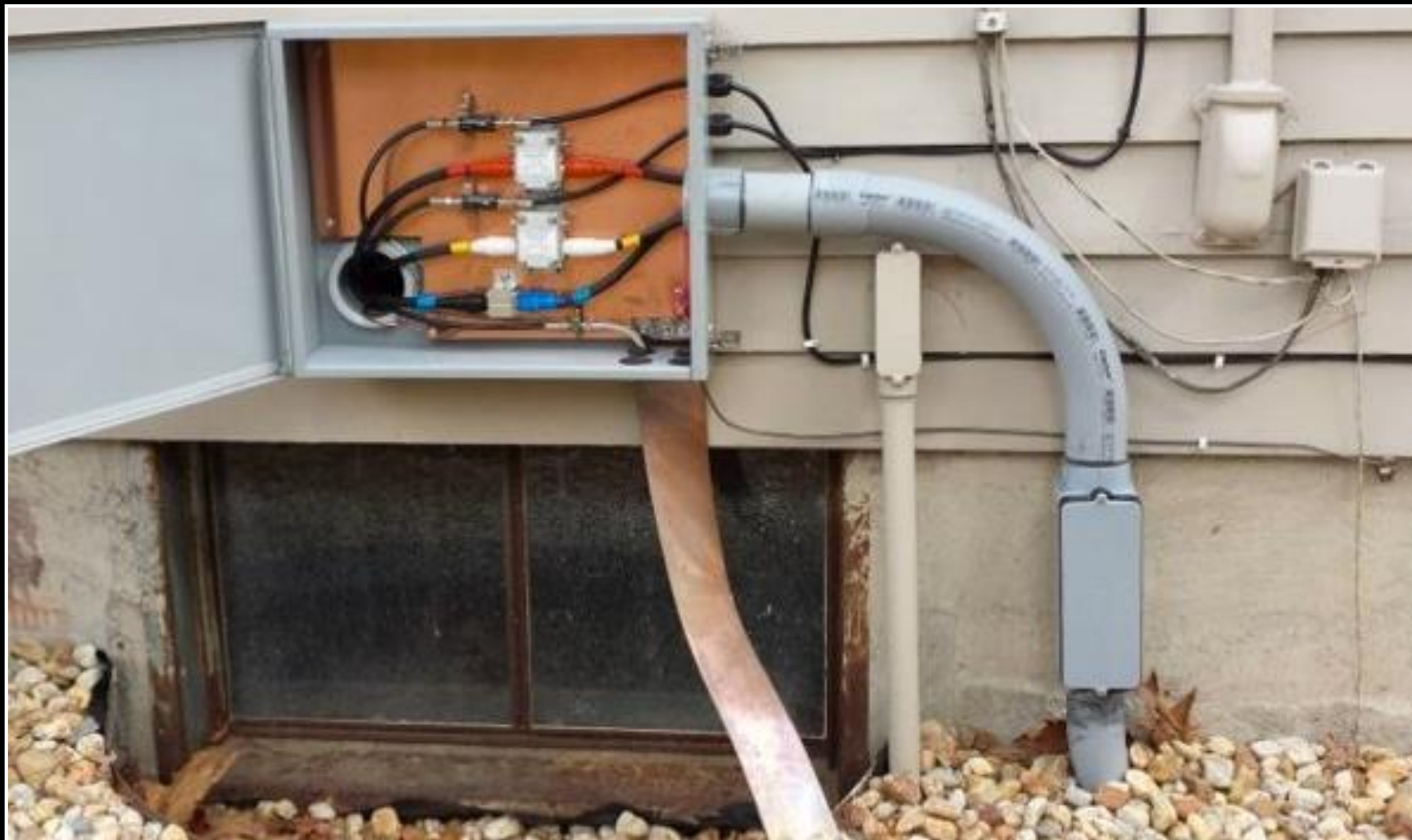
(Note copper ground panel should be connected to ground)





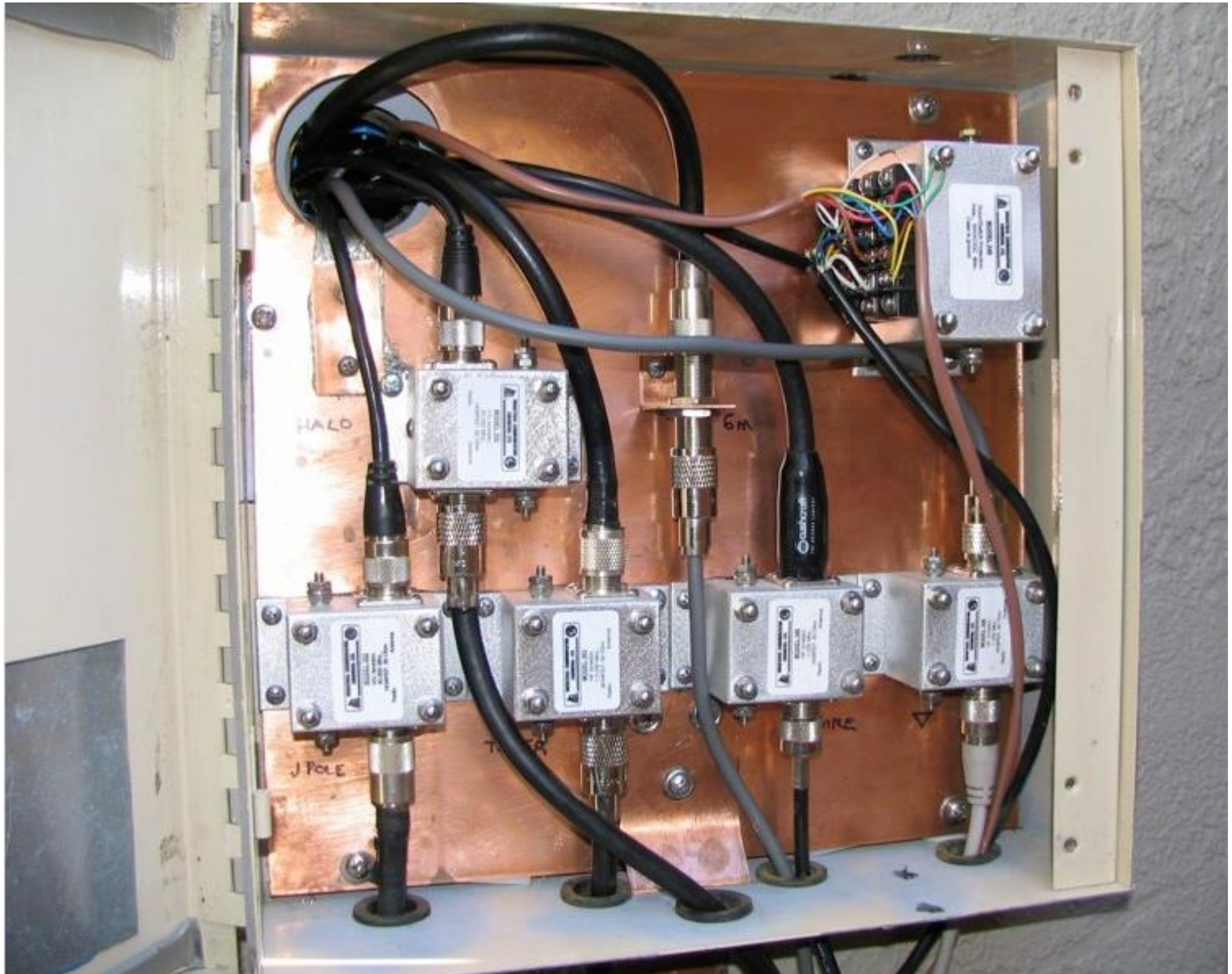
KC7DZM

Excellent
grounding!



AB1XB

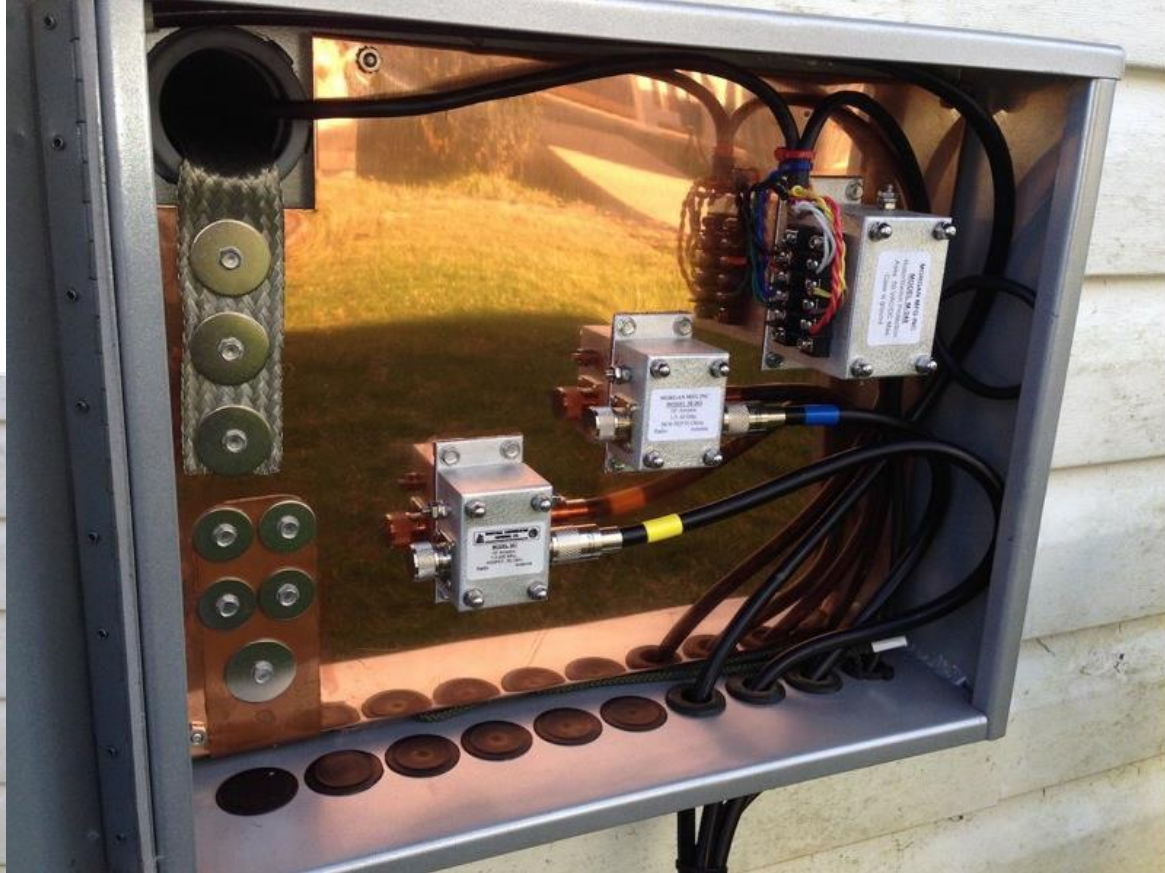
KF7P panel






Grounding
panel

N4AET





How did you
feed your coax
through your
wall?