

K7DF

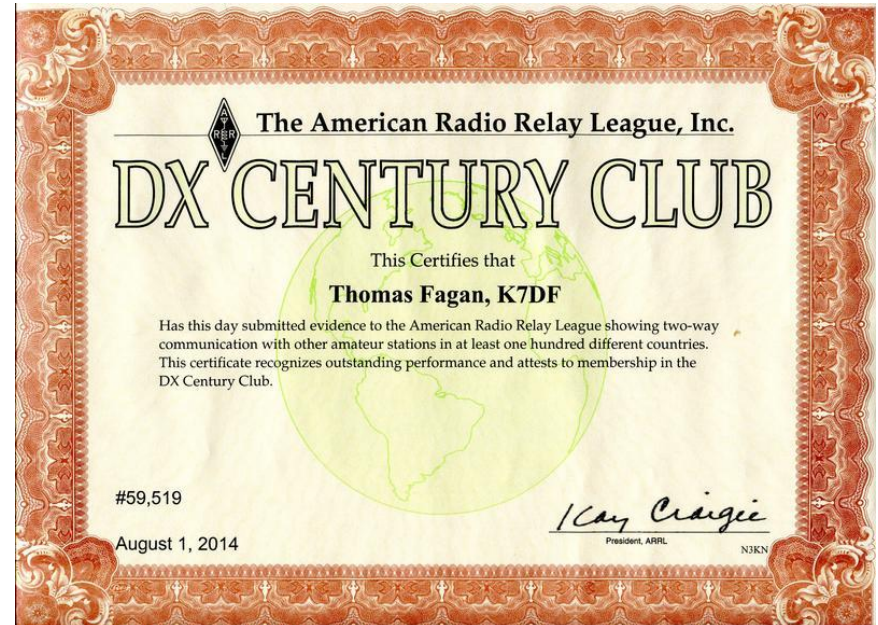
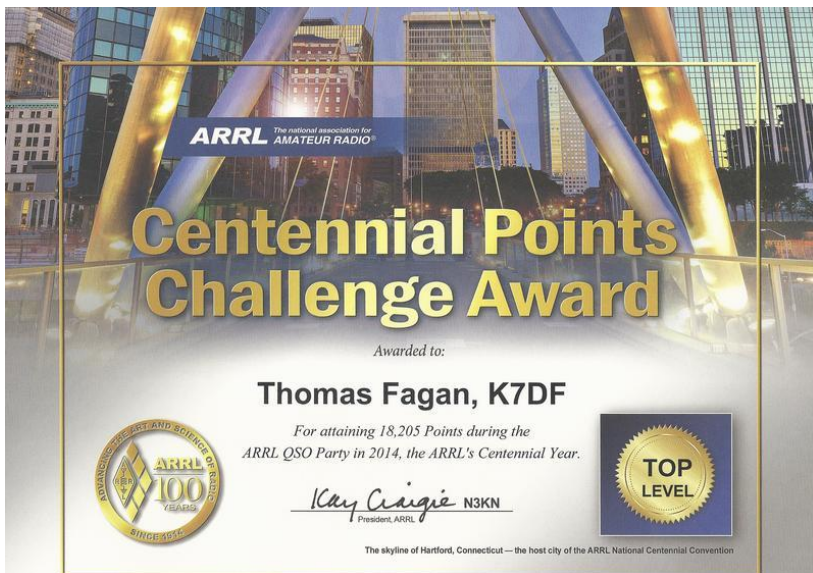
Tom Fagan

2021 Ham Shack Update

ARRL Arizona Assistant Section Manager,
Former ARRL Arizona Section Manager
ARRL Southwestern Division Assistant Division
Director
LOTW, eQSL, QRZ, Clublog

2020

- We moved from southeast Tucson to east Vail Arizona in October 2020 (~10 miles southeast)
- It still has a HOA but after living in a HOA for 30 years, I have become an expert at hiding antennas.
- With hidden antennas I have over 14,000 QSO's on HF.
- I have DXCC with over 200 countries confirmed and close to 260 worked (CW, SSB, RTTY, FT8, etc).

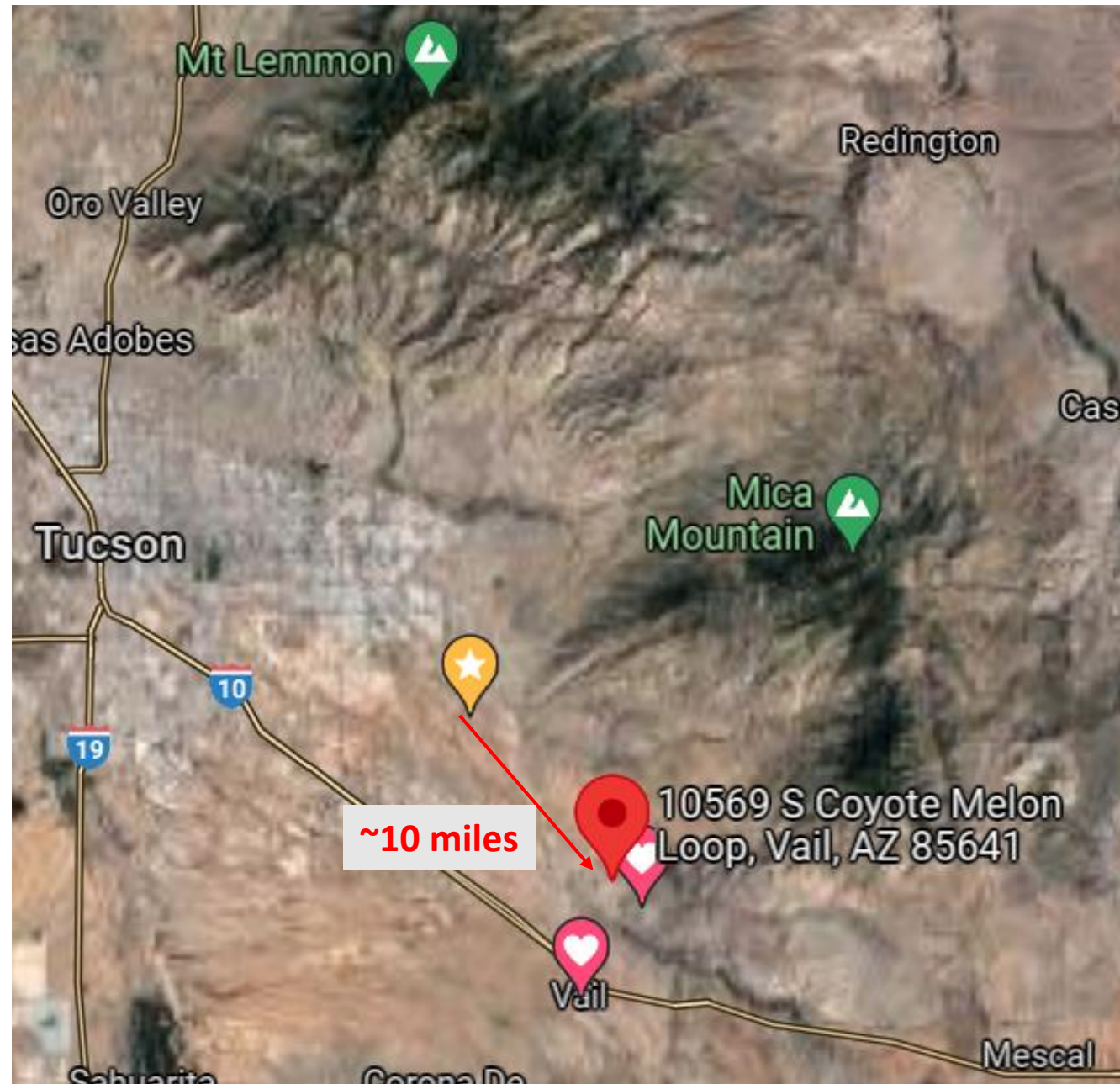


Tucson Arizona

Tucson is surrounded by mountains.

We live on the south end of the Rincon mountain just north of Mt. Fagan.

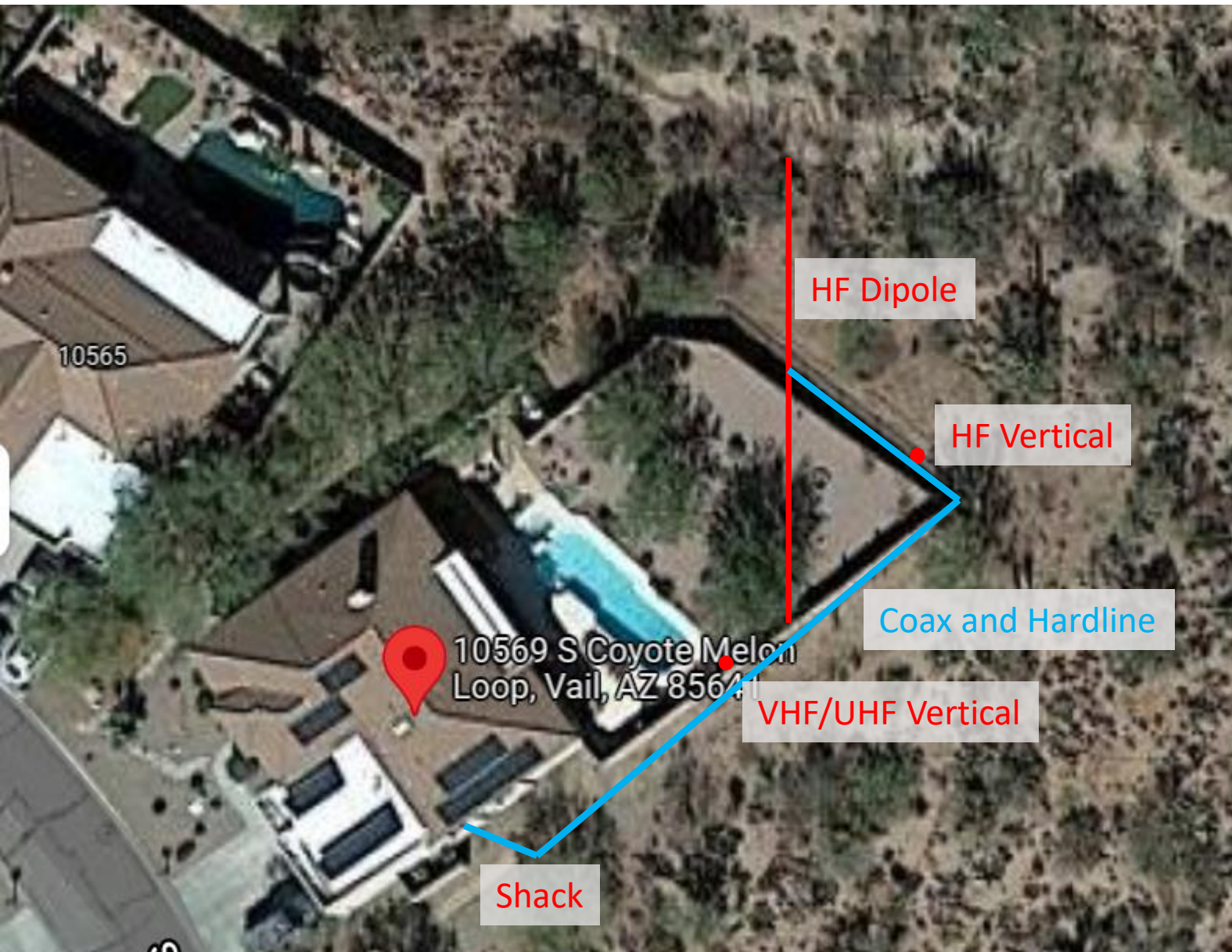
I am at 3300 foot elevation in the foothills, well above Tucson.



Our house has a big back yard that no one can build on due to the washes



Antenna layout



Back Yard View with antennas

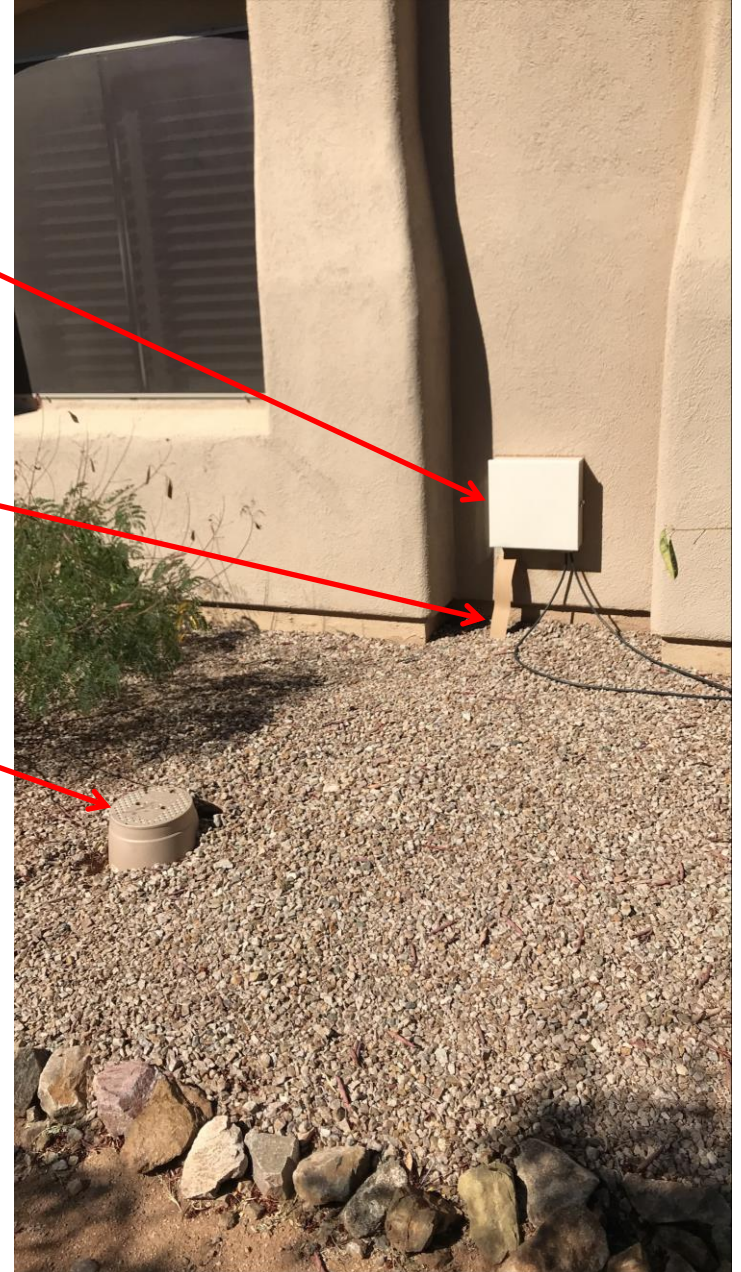


Lightning protection

KF7P Coax entry panel

3" wide 25 foot
ground strap

Ground rod
with drip
system access



Inside Access Panel

2-inch PVC conduit
Into shack

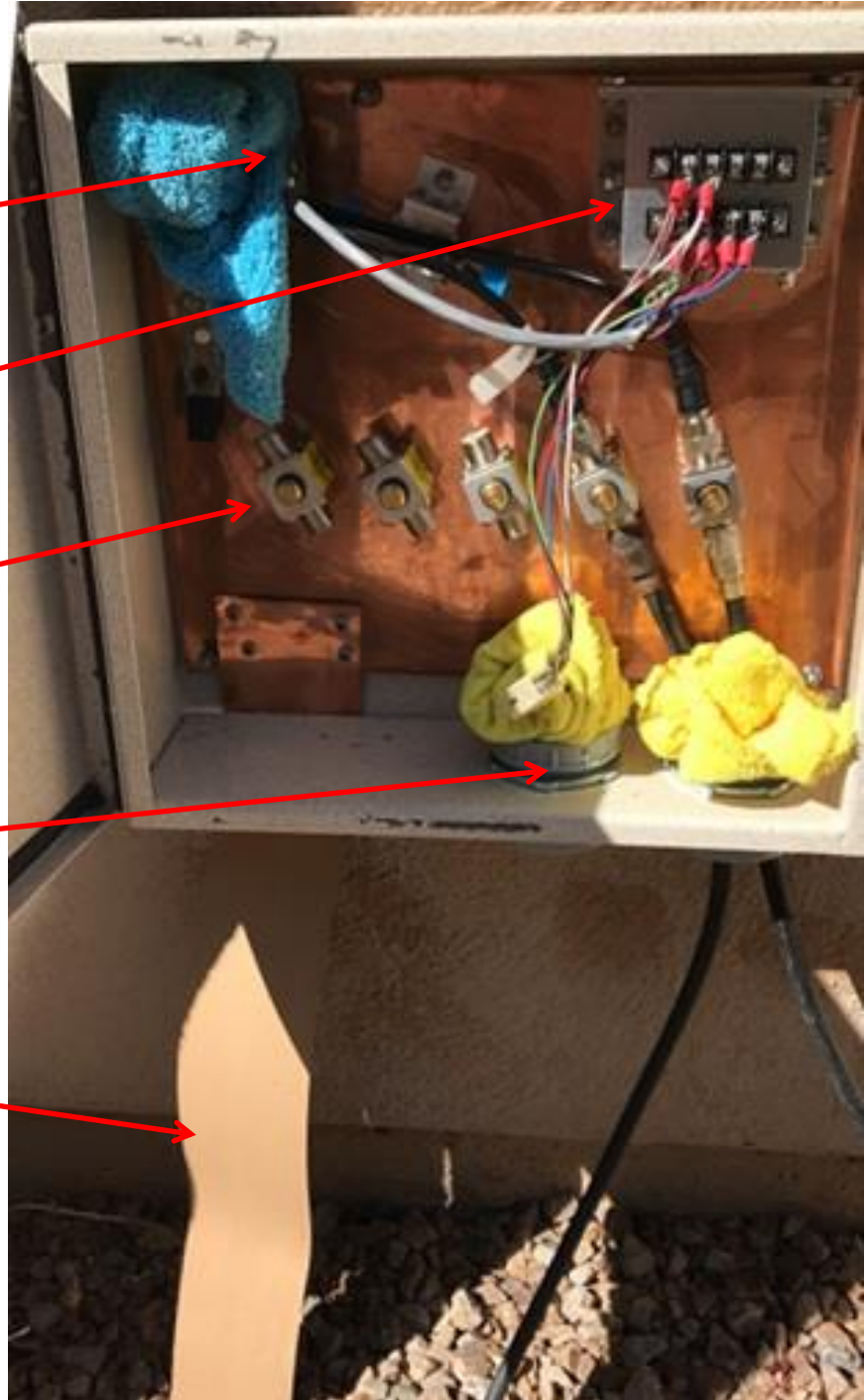
Morgan Control line
surge protector

Alpha Delta
Arrestors

Two, 2-inch PVC conduit
from antennas

3" wide 25 foot
ground strap

Note: rags to keep out bugs and rattlesnakes



The shack

Yaesu FP1030A Linear Power supply

Niessi DG-503 Digital SWR meter

N6BT Bravo 5A band switch control

ICOM IC-9700 2m/70cm/23cm

Yaesu FTDX-3000 HF/6m

Heil Proset headphones

Antenna switch

2-inch conduit

